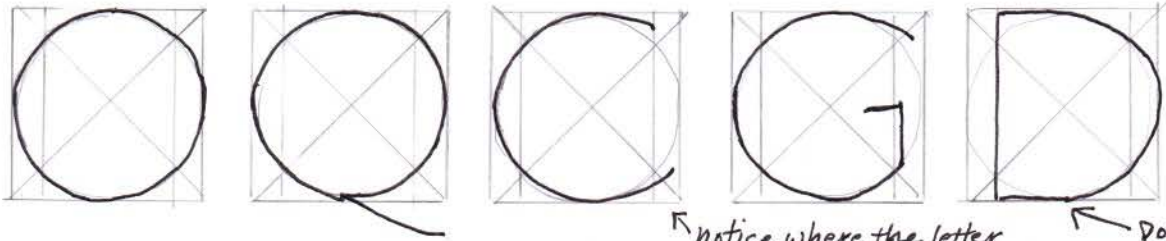
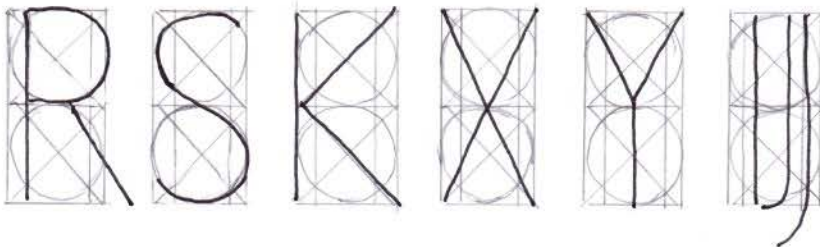
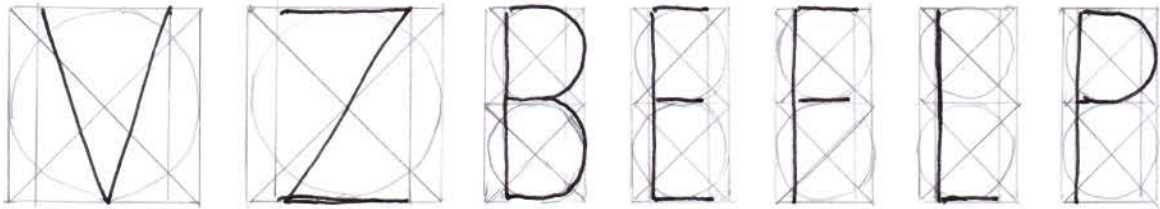
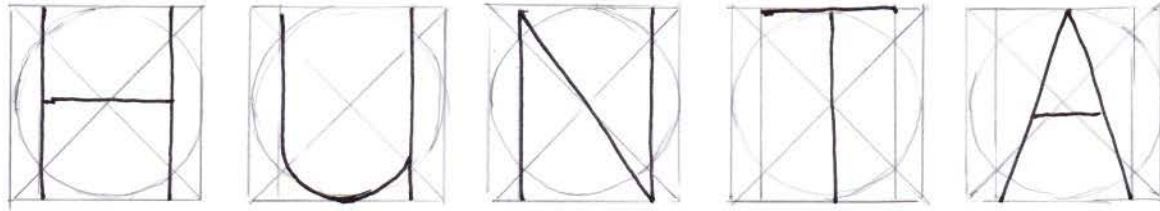


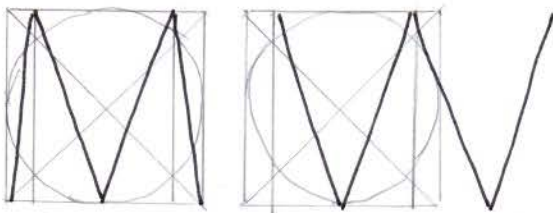
ROMAN CAPITALS BASIC PROPORTIONS



Notice where the letter starts & stops on the "C" & "G" Don't start the curve too soon

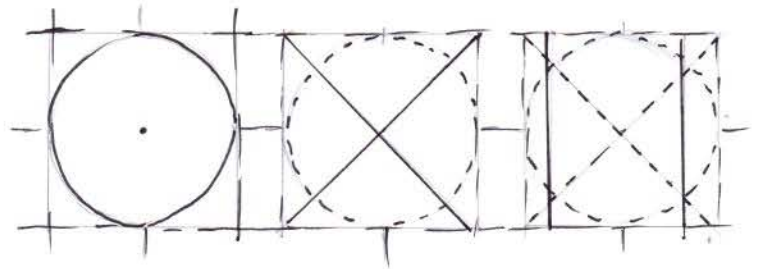


the "j" can stick within the square or drop gracefully just below.



Notice where the outside legs of "M" begin and end - They have a slight outward splay as if bending under the weight of the letter.

each half of "W" is slightly less than the width of a "V"



The proportions of ALL the letters are based on the letter "O." Begin with a square. Make the circle of "O" touch all four sides. Make an 'X' from corner to corner. Draw vertical lines that cross the points of intersection on the circle with the X. The narrower letters are comprised of 2 squares/circles one-half the width of the full-size letters.